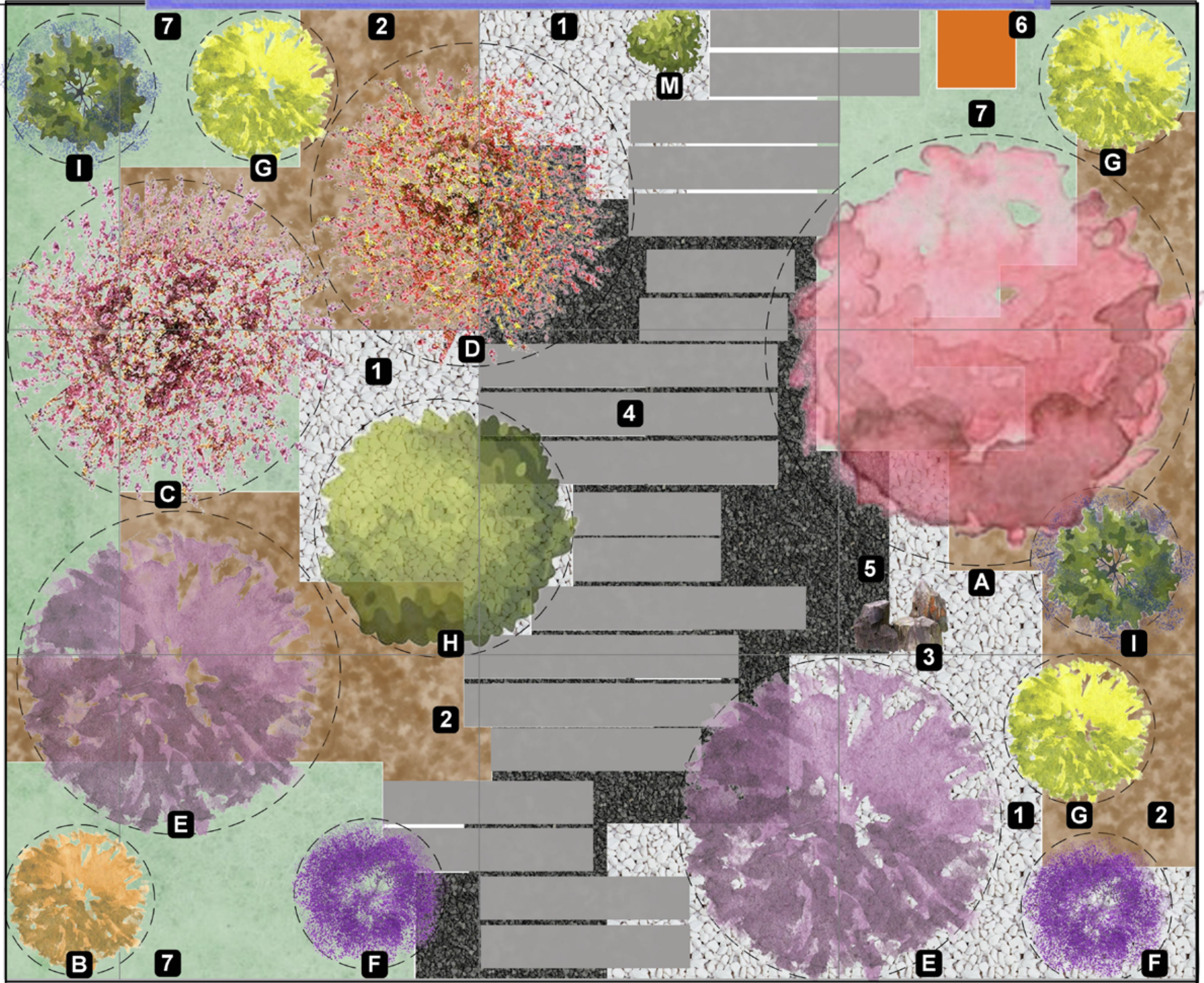
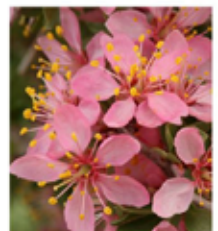




# Pollinators Garden



- |   |   |  |  |   |
|---|---|--|--|---|
|  <p><b>A</b> You'll need 1 of A<br/> <b>Desert Peach</b><br/> <i>(Prunus andersonii)</i><br/>         Sun: Full Sun, Part Shade<br/>         Water: Low<br/>         Growth Rate: Moderate<br/>         Height: 3.5' - 7'<br/>         Width : 5' - 8'<br/>         Flower Color: Pink</p>                 |  <p><b>B</b> You'll need 1 of B<br/> <b>Orange Honeysuckle</b><br/> <i>(Lonicera ciliosa)</i><br/>         Sun: Part Shade<br/>         Water: Average<br/>         Growth Rate: Moderate<br/>         Height: 10' -20'<br/>         Width: 30'<br/>         Flower Color: Orange, Yellow</p>                |  <p><b>C</b> You'll need 1 of C<br/> <b>Bush Anemone</b><br/> <i>(Carpenteria californica)</i><br/>         Sun: Full Sun, Part Shade<br/>         Water: Low, Moderate - High<br/>         Growth: Moderate<br/>         Height: 6' -10'<br/>         Width: 10'</p>  |  <p><b>D</b> You'll need 1 of D<br/> <b>Island Snapdragon</b><br/> <i>(Gambelia speciosa)</i><br/>         Sun: Full Sun, Part Shade<br/>         Water: Very Low<br/>         Growth Rate: Fast<br/>         Height: 1' - 3.3'<br/>         Width :10'</p>             |  <p><b>E</b> You'll need 2 of E<br/> <b>Western Redbud</b><br/> <i>(Cercis occidentalis)</i><br/>         Sun: Part Shade, Full Sun<br/>         Water: Low<br/>         Growth Rate: Moderate<br/>         Height: 10' -20'<br/>         Width : 10' - 15'<br/>         Flower Color: Pink, Yellow, Red</p> |
|  <p><b>F</b> You'll need 2 of F<br/> <b>Woolly Bluecurls</b><br/> <i>(Trichostema lanatum)</i><br/>         Sun: Part Shade, Full Sun<br/>         Water: Very Low, Low<br/>         Growth Rate: Fast<br/>         Height: 5'<br/>         Width: 10'<br/>         Flower Color: Blue, Lavender, Pink</p> |  <p><b>G</b> You'll need 3 of G<br/> <b>Golden Currant</b><br/> <i>(Ribes aureum)</i><br/>         Sun: Part Shade<br/>         Water: Low, Moderate - High<br/>         Growth Rate: Fast, Moderate<br/>         Height: 6' - 10'<br/>         Width: 5' - 10'<br/>         Flower Color: Yellow, Cream</p> |  <p><b>H</b> You'll need 1 of H<br/> <b>Eastwood Manzanita</b><br/> <i>(Arctostaphylos glandulosa)</i><br/>         Sun: Full Sun, Part Shade<br/>         Water: Very Low, Low<br/>         Growth : Moderate<br/>         Height: 3' -12'<br/>         Width: 8'</p> |  <p><b>I</b> You'll need 2 of I<br/> <b>Sonoma Sage</b><br/> <i>(Salvia sonomensis)</i><br/>         Sun: Full Sun, Part Shade<br/>         Water: Extremely Low, Very Low<br/>         Growth Rate: Moderate<br/>         Height: 1.3'<br/>         Width: 5' -15'</p> |  <p><b>M</b> You'll need 1 of M<br/> <b>Island Morning Glory</b><br/> <i>(Calystegia macrostegia)</i><br/>         Sun: Full Sun<br/>         Water: Very Low<br/>         Growth Rate: Fast<br/>         Height: 1'<br/>         Width: 20' -30'<br/>         Flower Color: Pink, White</p>                 |
|  <p><b>1</b> Planter Gravel<br/>         You'll need 53 ft<sup>3</sup> of 1</p>  |  <p><b>2</b> Mulch<br/>         You'll need 66 ft<sup>3</sup> of 2</p>   |  <p><b>3</b> Rock Style<br/>         You'll need 1 of 3</p>  |  <p><b>4</b> Stepping Stones<br/>         You'll need 164 ft<sup>2</sup> of 4</p>   |  <p><b>5</b> Black Basalt (6mm)<br/>         You'll need 22 ft<sup>3</sup> of 5</p>  |
|  <p><b>6</b> Rain Barreles/Cisterns</p>  |  <p><b>7</b> You'll need 295 ft<sup>2</sup> of 7</p>   |  |  |   |